

03



ACCESSORIES FOR GAS CUTTING AND WELDING

03

CONTENTS

1. Plasma cutting machine	68
2. CNC Cutting machines	70
3. Professional compressed air system	81
4. Semi-automatic gas cutting machines	84
5. Hydrogen generators	88
6. Gas regulators	90
7. Torches	92
7.1. Universal torches	92
7.2. Cutting torches	94
8. Arrestors and couplings	96
9. Accessories	97
10. Gas cylinders	99

1. Plasma cutting machine



SpeedCut 15/30 MOST

This is the plasma cutting technology available directly from stock.
Designed to work with plasma power sources up to 125 A.

SpeedCut 15/30 MOST is able to cut metal sheets in thickness from 0,5 up to 30 mm.



Main features of SpeedCut 15/30 MOST:

- working area 1500 x 3000 mm,
- speed rate 25000 mm/min,
- working speed up to 10000 mm/min,
- table load capacity: 4000 kg,
- working range of vertical axis = 110 mm,
- fully galvanized construction,
- table type: water grate (bath from stainless steel),
- total weight: about 1500 kg,
- table dimensions: 3600 x 2050 x 1650 mm,
- control panel based on dedicated, fully authorized control system significantly increases the precision and accuracy of cutting,
- lubricant guide system ensures easy maintenance and extending the service life of X and Y-axis,
- easy to use integrated control panel ensures intuitive and ergonomic operation,
- computer screen protected by hardened glass,
- modern system of material positioning,
- one module construction guarantees easy transport and assembly by fork lift.

Standard plasma cutting table equipment:

- TSC- Torch Sensor Control- unique system of double torch positioning , protecting torch against accidental damages.
- Stop & Go- system to simulate the process of cutting, easy start and manual cutting.
- QS- Quick Start of cutting process from "stand by" position in less than 1 minute.
- RBE- Rotary Basing Edge- innovative system of material positioning, no need to put material perpendicular / parallel to the table.
- DR- Dynamic Referencing – dynamic indication of the point 0,0 useful for cutting untypical shapes.

Optional software CAM:

- Cutting outside the standard range.
- Offsets outside and inside.
- Data import in DXF form.
- Configuration of cutting parameters.



Plasma cutting table SpeedCut 15/30 MOST
Catalogue no. 60 75 001530

Plasma Power source POWERMAX

Power sources with high cutting performance used in all kind of work related to the automatic cutting of steel.

Power sources are designed to work in heavy industrial environment, what makes them ideal for automated cutting of all conductive metals. Depending on the type of machine allows to cut the material up to thickness of :

POWERMAX 65 A (optimal cutting up to 10-12 mm)

POWERMAX 85 A (optimal cutting up to 14-16 mm)

POWERMAX 105 A (optimal cutting up to 18-20 mm)

POWERMAX 125 A (optimal cutting up to 22-25 mm)



Screw compressor KZB 5,5 kW 500 L COMBO MOST

Compressor built on the base of 500 L tank equipped with a set of dryer, pre-filter and fine filter. The power of 5,5 kW, pressure 10 bar, output 700 L/min. The device is designed for small and medium-sized factories, which value reliability and low cost of compressed air generation.

Catalogue no. 60 84 000501

2. CNC Cutting machines



Diamant Fiber Laser 2

LASER



Type	DIAMANT FIBER LASER 2
Drives	servo AC
Working area	1500 x 3000, 2000 x 4000 i 2000 x 6000 mm
Z axis movement	115 mm
Max. axis positioning speed X/Y	120 m/min
Positioning accuracy	+/- 0,03 mm
Laser beam power	1000- 6000 W

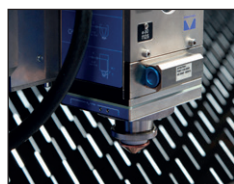
CHARACTERISTICS

Diamond Fiber Laser cutting machine that operates with a fiber laser technology. It is dedicated to users whose priority is speed and the highest cutting precision also in complicated contours. Using of fiber laser technology significantly decreases the complexity of laser system and directly reduces operating costs.

Individual consumer's needs are ensured by the application of compact gantry construction that enhances stability, completely closed safety cabinet protecting against laser radiation and capability of adjusting the working area dimensions.

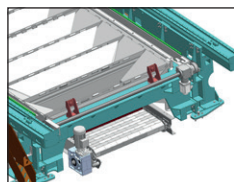
Main features:

- the most modern technology of cutting,,
- capability of processing a wide range of reflective materials (copper, brass, polished materials),
- high dynamic and best cutting precision,
- long-term reliability ensured by the highest quality components produced by prestigious manufacturers,
- innovative PCS system which is able to analyze and precisely select piercing time with accordance to the material applied, shortens the cutting time up 30%,
- optional installment of linear actuators to replace servomotors,
- fully automated cutting process with load and unload of the plates,
- customer service provided by Polish manufacturer.



CUTTING HEAD WITH PCS

Precitec cutting torch ensures exceptional reliability and cutting quality. Integrated capacity sensor safeguards stability and prevents collisions. To protect its high grade optical components, this cutting torch is fitted with a protective glass which is located in the cartridge. Optionally installed, innovative PCS (Piercing Control System) controls the laser beam emission while enhancing efficiency and productivity. Shortens the cutting time up to 30%.



STEEL BELT CONVEYOR

All Diamant Fiber Laser cutting machines are equipped with steel belt conveyors, designed for quick and effective eliminating jamming, as slag and scrap pieces that are dumped off the conveyor. Comparing to the straight conveyors. this unit is provided with a self-cleaning system, that increases productivity and efficiency since there is no need to stop production to remove spatters.



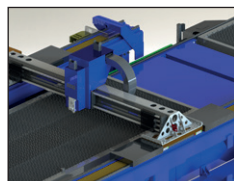
AUTOMATIC PALLET TABLE

Exchangeable pallet table consists of two working areas which enable the possibility of alternate entering and departing the working area allowing the unloading of finished elements and loading new material. Pallet table is equipped with belt feeder responsible for collecting elements which are too small to retain on the grate. The table is equipped with safety laser gates to realize the required safety of work.



CNC CONTROL PANEL

CNC control panel is a high quality industrial device, equipped with touch screen. Efficient components and construction resistant to extreme production conditions guarantee failure free operation. Unsurpassed functionality of proprietary software and intuitive drive interface enable full exploitation of the machine's capacity.



CONSTRUCTION

Portal construction assures stability and endurance of the whole machine. Completely closed safety cabinet covering the entire cutting area and the using of exchangeable pallet tables increase the work safety. The construction of the rails is based on high precision linear slides and modern servo motors to guarantee accuracy cutting torch set-up, high dynamics and trouble-free operations. All these components make the construction suitable for thick plates treatment.

ADDITIONAL EQUIPMENT



FILTROVENTILATION



PIERCING CONTROL SYSTEM



AUTOMATIC LOADING /UNLOADING



PLATE FEEDER



AUTOMATIC PALLET TABLE



MONITORING OF WORKING AREA

**CHARACTERISTICS**

Modern constructions and mechanics solutions were used during the designing of the Onyx. They ensured the best efficiency and the attractive, innovative look.

Modified bridge construction makes it more rigid and resistant for high temperature. It is very important especially during cutting thick materials up to 300 mm.

The unique combination of safety systems used in plasma-oxygen cutter Onyx ensure the highest comfort and the best level of safety for machine operators and people around them.

MAIN FEATURES:

- plasma Vortex 3D FL torch ensure the best precision of automatic 3D cutting of plates, pipes and profiles,
- more bridge rigid make possible to cut 1-300 mm thickness plates,
- modern i-Vision controller installed on moving arm delivers the unique ergonomic and comfortable work,
- modified drive system ensures clear X-axis positioning during dynamic cutting,
- Power LED lighting and light curtains warrants safe work,
- perfect results thanks to greater base of predefined plasma and oxygen cutting parameters,
- integrated modules inside of the machine make better resistance for adverse influences from cutting process.



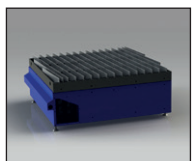
Type	ONYX
Drives	Servo AC
Cutting width	2000-7000 mm
Basic working length	Any length from 1500 mm
Positioning speed	25000 mm/min
Cutting thickness	up to 300 mm
Cutting quality	PN-EN ISO 9013
Positioning accuracy	PN-EN 28206
Cutting table height	740-760 mm

**VORTEX 3D FACELIFT TORCH**

The fully automated plasma cutting torch enables very precise beveling and chamfering in a single sheet cutting process. Angle of rotation $\pm 540^\circ$ and torch angle deflection $\pm 47^\circ$, makes our cutting machine a universal tool able to work in three dimensions together with preparing welding phases on Y, V and K. Vortex 3D cutting torch is equipped with sensors: anti-collision, electrical/mechanical touch and capacity sensor. This allows using technologies such as: Contour Cut®, Contour Cut Speed®, Diameter Pro® and True Hole®.

**OXYGEN TORCH**

Oxygen torch is the cutting solution destined to cut structural low-carbon and low-alloy steel. It is capable of processing wide range of material thickness. The torch has capacity sensor, automatic ignition and possibility of manual angle setting. Onyx Oxygen Torch make possible to cut 1-300 mm thickness plates.

**VENTILATION TABLE**

Modular section tables grant efficient elimination of fumes during the cutting process. The cutting machine was implemented with the self-supporting construction as the base for the frame with replaceable grids. Such construction offers safe and the best possible safety and performance of the table. The cutting table is provided with intelligent system of fumes extraction from the cutting area. Each segment consists of supporting structure with ventilation channels, diagonal grid, scrap tank and pneumatic controlled channels.

**I-VISION**

The most modern i-Vision Controller is the high quality industry machine has Corning® Gorilla® Glass touch screen. Efficient parts and the strong construction ensures reliability of Onyx working. Many functions of software and simple controller's interface let to use all of machine's possibilities. Controller's chair on the moving arm delivers the unique comfort and safety of machines operator. It make also possible to watching the cutting process and controller's using at the same moment.

**CONSTRUCTION**

The Onyx construction is made of closed profiles with large cross-sections. Integration of cabling and controlling elements inside the machine ensures more agility and less risk for destroying because of high temperature or other factors during the cutting. The size of guiding, specially prepared rails and using double linear guides efficiently make the machine stable and deliver the best safety and accuracy.

ADDITIONAL EQUIPMENT

FILTRATION/VENTILATION



GANTRY EXTENSION



PLASMA MARKING



ESR SYSTEM



THERMAL SHIELD



DRILLING



PUNCH MARKING



VORTEX 3D TORCH

AUTOMATIC
PALLET TABLE



Sapphire

OXYGEN

PLASMA



CHARACTERISTICS

Sapphire cutting machine is dedicated to work in the heaviest industry. It is suitable for three shift work system and guarantees high quality processing to meet your needs while keeping efficiency at a substantial level. Sapphire is defined by a stable construction and numerous outstanding technological solutions, which guarantee failure-free use.

Sapphire, as optimal solution for the heavy industry, is popular among the machine production plants, shipyards, and among those who value efficiency and reliability. Considering a broad scope of applications (plasma and oxygen cutting, plasma marking, punch marking, drilling) the machine is a versatile tool created to meet even the most demanding customers' expectations. Sapphire cutting machines are working in more than 400 industrial plants where it is proving its excellence.

MAIN FEATURES:

- highly dynamic and precise in automated 2D/3D cutting of metals sheets, pipes, beams,
- capability of processing plates up to 300 mm thickness,
- expanded base of predefined cutting parameters,
- unlimited possibility of increasing the length of the working area.

Type	SAPPHIRE
Drives	Servo AC
Cutting width	2000-7000 mm
Basic working length	Any length from 1500 mm
Positioning speed	25000 mm/min
Cutting thickness	Up to 200 mm (300 mm – optional)
Cutting quality	PN-EN ISO 9013
Positioning accuracy	PN-EN 28206
Cutting table height	740-760 mm



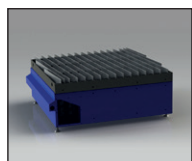
VORTEX 3D FACELIFT TORCH

The fully automated plasma cutting torch enables very precise beveling and chamfering in a single sheet cutting process. Angle of rotation $\pm 540^\circ$ and torch angle deflection $\pm 47^\circ$, makes our cutting machine a universal tool able to work in three dimensions together with preparing welding phases on Y, V and K. Vortex 3D cutting torch is equipped with sensors: anti-collision, electrical/mechanical touch and capacity sensor. This allows using technologies such as: Contour Cut®, Contour Cut Speed®, Diameter Pro® and True Hole®.



OXYGEN TORCH HARRIS

Oxygen torch is the cutting solution destined to cut structural low-carbon and low-alloy steel. It is capable of processing wide range of material thickness. The torch has capacity sensor, automatic ignition and possibility of manual angle setting.



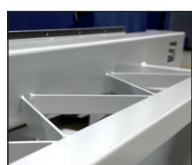
VENTILATION TABLE

Modular section tables grant efficient elimination of fumes during the cutting process. The cutting machine was implemented with the self-supporting construction as the base for the frame with replaceable grids. Such construction offers safe and the best possible safety and performance of the table. The cutting table is provided with intelligent system of fume extraction from the cutting area. Each segment consists of supporting structure with ventilation channels, diagonal grid, scrap tank and pneumatic controlled channels.



CNC CONTROL PANEL

ECS872 centre is a high quality industrial device, equipped with touch screen. Efficient components and construction resistant to extreme production conditions guarantee failure free operation. Unsurpassed functionality of proprietary software and intuitive drive interface enable full exploitation of the machine's capacity.



CONSTRUCTION

Gantry construction is based on welded steel beams which thanks to stress relief is characterized by high rigidity while maintaining relatively small weight. Applied construction solutions assure stability of the machine geometry which is not prone to maladjustment during large weight or thermal loads. This ensures high process safety also for three shift working companies.

ADDITIONAL EQUIPMENT



FILTRATION VENTILATION



GANTRY EXTENSION



PLASMA MARKING



ESR SYSTEM



DRILLING



PUNCH MARKING



VORTEX 3D TORCH

AUTOMATIC
PALLET TABLE



CHARACTERISTICS

Jantar is the most popular model among all the Eckert's machines, because of its dynamics and cost effectiveness. Jantar is used by several hundred large and small companies that pursue unsurpassed performance and low working costs.

Jantar cutting machine can be equipped with plasma and oxygen system. Additionally its functionality can be improved by using our wide range of additional equipment (plasma and punch marking, drilling and also pipes and profiles machining).

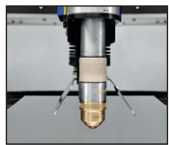
Its optimized construction for failure-free operation is confirmed by the thousands of customers across the whole Europe.

MAIN FEATURES:

- attractive price of richly equipped basic version,
- highly dynamic 2D precision cutting of sheets, tubes, pipes and profiles,
- capability of processing plates from 0,5 mm to 100 mm thickness,
- expanded base of predefined cutting parameters,
- unlimited possibility of increasing the length of the working area.



Type	JANTAR
Drives	Servo AC
Cutting width	1500, 2000, 2500, 3000 mm
Basic working length	Any length from 1500 mm
Positioning speed	25000 mm/min
Cutting thickness	Up to 100 mm
Cutting quality	PN-EN ISO 9013
Positioning accuracy	PN-EN 28206
Cutting table height	740-760 mm



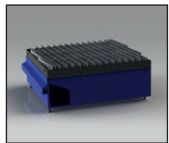
SUPPORT HD3000

Support HD3000 enables full exploitation of the most modern plasma torches. Application of the ball screw gear and high torque servomotor is the unique drive and support leading in Z-axis resolution, which allows for more dynamic and increased accuracy in the torch control. This guarantees the perfect distance between the cutting torch and the material for maximum cutting quality. Support HD3000 is equipped with sensors: anti-collision, electrical/mechanical touch and height sensor. This allows using technologies such as: Contour Cut®, Contour Cut Speed®, Diameter Pro® and True Hole®.



OXYGEN TORCH HARRIS

Oxygen torch is the cutting solution dedicated to cut structural low-carbon and low-alloy steel. It is capable of processing wide range of material thickness. The torch has got capacity sensor, automatic ignition and possibility of manual angle setting.



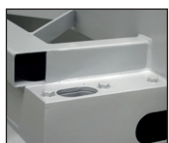
VENTILATION TABLE

Modular section tables grant efficient elimination of fumes during the cutting process. The cutting machine was implemented with the self-supporting construction as the base for the frame with replaceable grids. Such construction offers safe and the best possible safety and performance of the table. The cutting table is provided with intelligent system of fume extraction from the cutting area. Each segment consists of supporting structure with ventilation channels, diagonal grid, scrap tank and pneumatic controlled channels.



CNC CONTROL PANEL

ECS872 centre is a high quality industrial device, equipped with touch screen. Efficient components and construction resistant to extreme production conditions guarantee failure free operation. Unsurpassed functionality of proprietary software and intuitive drive interface enable full exploitation of the machine's capacity.



CONSTRUCTION

Gantry construction is based on welded steel beams which thanks to stress relief are characterized by high rigidity while maintaining relatively small weight. Applied construction solutions assure stability of the machine geometry which is not prone to maladjustment during large weight or thermal loads.

ADDITIONAL EQUIPMENT



FILTRATION



GANTRY EXTENSION



PLASMA MARKING



ESR SYSTEM



DRILLING



PUNCH MARKING



Agat

OXYGEN

PLASMA



CHARACTERISTICS

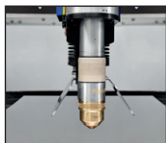
Agat - the machine designed for shape and straight cut of non-alloyed, low-alloyed and non-ferrous metal sheet. Agat is dedicated to medium and small manufacturers of steel constructions and also to workshops, and repair & maintenance companies.

Agat cutting machine can be equipped with plasma and oxygen cutting system. Well-verified, failure-free construction and economical price attracted many customers in Poland.

MAIN FEATURES:

- attractive price of richly equipped basic version,
- highly dynamic 2D precision cutting,
- capability of processing plates from 0,5 mm to 100 mm thickness,
- expanded base of predefined cutting parameters.

Type	AGAT
Drives	Servo AC
Cutting width	1500, 2000, 2500, 3000 mm
Basic working length	Maximum 6000 mm
Positioning speed	25000 mm/min
Cutting thickness	Up to 100 mm
Cutting quality	PN-EN ISO 9013
Positioning accuracy	PN-EN 28206
Cutting table height	740-760 mm



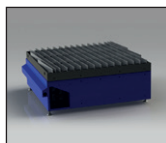
PLASMA SUPPORT

Plasma support enables full exploitation of plasma torches which give economical and high quality advantage. Plasma support is a perfect supplement for oxygen cutting technology as it benefits from the low investment cost in plasma technology and its efficiency.



OXYGEN TORCH

Oxygen torch is the cutting solution destined to cut structural low-carbon and low-alloy steel. It is capable of processing wide range of material thickness. The torch has capacity sensor, automatic ignition and possibility of manual angle setting.



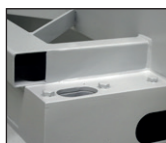
VENTILATION TABLE

Modular section tables grant efficient elimination of fumes during the cutting process. The cutting machine was implemented with the self-supporting construction as the base for the frame with replaceable grids. Such construction offers safe and the best possible safety and performance of the table. The cutting table is provided with intelligent system of fume extraction from the cutting area. Each segment consists of supporting structure with ventilation channels, diagonal grid, scrap tank and pneumatic controlled channels.



CNC CONTROL PANEL

ECS872 centre is a high quality industrial device, equipped with touch screen. Efficient components and construction resistant to extreme production conditions guarantee failure free operation. Unsurpassed functionality of proprietary software and intuitive drive interface enable full exploitation of the machine's capacity.



CONSTRUCTION

Gantry construction is based on welded steel beams which thanks to stress relief are characterized by high rigidity while maintaining relatively small weight. Applied construction solutions assure stability of the machine geometry which is not prone to maladjustment during large weight or thermal loads.

ADDITIONAL EQUIPMENT



FILTROVENTILATION



Opal WaterJet Combo

CHARACTERISTICS

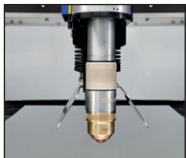
Patented Opal Waterjet Combo is able to combine the advantages of quick plasma cutting with precision of water jet. Synergistic effect of combining two different technologies allows the cutting machine to exploit both assets. The cutting machine offers versatility and flexibility for a wide range of users from small to big companies..

MAIN FEATURES:

- innovative, patent protected technology of integrating waterjet and plasma allows automatic cutting using both of them,
- the reduction of production costs even by 70% with comparison to standard waterjet machines,
- universal cutting machine for every material,
- possibility of installing Pro-X 3D torch,
- ability to apply any required technology during edge cutting of a single element,
- strong construction and reliability,
- abrasive or pure water cutting.



Type	OPAL WATERJET COMBO
Drives	Servo AC
Cutting width	1500- 6000 mm
Basic working length	1000- 12000 mm
Cutting thickness	0,5- 150 mm (250 mm option)
Positioning speed	25000 mm/min
Positioning accuracy	±0,025 mm



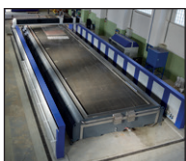
SUPPORT HD3000

Support HD3000 enables full exploitation of the most modern plasma torches. Application of the ball screw gear and high torque servomotor is the unique drive and support leading in Z axes resolution, which allows for more dynamic and increased accuracy in the torch control. This guarantees the perfect distance between the cutting torch and the material for maximum cutting quality. Support HD3000 is equipped with sensors: anti-collision, electrical/mechanical touch and capacity sensor. This allows using technologies such as: Contour Cut®, Contour Cut Speed®, Diameter Pro® and True Hole®.



Pro-X 3D CUTTING TORCH

5-axis Pro-X 3D torch provides a very high level of efficiency and insures the achievement of maximum 3-dimensional precision. The maximum cutting angle +/- 47 and automatic angle compensation ensure great precision and practically zero angle on the cutting edge.



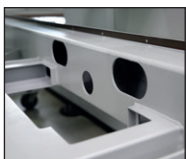
WATER TABLE

Opal Waterjet cutting machine is equipped with the stable water table with double grid system. Steel, fully tinned (as option) construction insures durability and corrosion resistance. The independent table construction ensures maximum stability and smooth running operations.



I-VISION

The most modern i-Vision controller is a high quality industrial device. Efficient components and construction suitable to extreme production conditions guarantee failure free operation. Unsurpassed functionality of proprietary software and intuitive drive interface enable full exploitation of the machine's capacity. i-Vision controller installed on moving arm delivers the unique ergonomic and comfortable work.



CONSTRUCTION

Opal Waterjet has gantry construction. The machine is made of steel closed profiles which ensure great stability. Rail elements where protected against harmful influence of water with protective bellows or covered by aluminum parts. Relatively low weight of the gantry and specially grounded racks furnishes our Opal Waterjet with excellent dynamics and high precision engines increase accurate positioning.

ADDITIONAL EQUIPMENT



PRO-X3D
CUTTING TORCH



ESR SYSTEM



SCRATCH CONVEYOR



DYNAMIC WATER LEVEL



PLASMA MARKING



PUNCH MARKING



ABRASIVE CUTTING



WATER SOFTENING
SYSTEM



Opal WaterJet

WATER



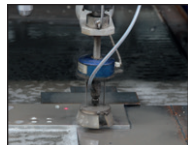
CHARACTERISTICS

Opal Waterjet cutting machine was created in response to the need of obtaining smooth, high-quality finish with no heat-affected zone or thermal distortion. Utilization of waterjet cutting allows work with a wide variety of materials such as: stone, wood, plastics etc. up to 250 mm thickness. Optional use of PRO-X 3D cutting torch widens design capability of the machine by 3D operations.

MAIN FEATURES:

- versatility,
- there are no fumes as a by-product of cutting,
- abrasive or pure water cutting,
- waterjet cutting system can operate with up to four cutting torch at a time.

Type	OPAL WATERJET
Drives	Servo AC
Cutting width	1000- 6000 mm
Basic working length	1000- 12000 mm
Cutting thickness woda	0,5- 150 mm ((250 mm option)
Positioning speed	25000 mm/min
Positioning accuracy	±0,025 mm



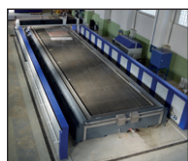
2D CUTTING TORCH

2-axis waterjet cutting torch Accustream is utilizing proven in practice hydro-abrasive cutting technology. Well designed construction torch equipped with capacity sensor and anti collision device guarantee the best quality cuts and faultless operation.



PRO-X 3D CUTTING TORCH

5-axis Pro-X 3D torch provides a very high level of efficiency and insures the achievement of maximum 3-dimensional precision. The maximum cutting angle +/- 47 and automatic angle compensation ensure great precision and practically zero angle on the cutting edge.



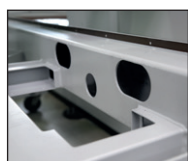
WATER TABLE

Opal Waterjet cutting machine is equipped with the stable water table with double grid system. Steel, fully tinned (as option) construction insures durability and corrosion resistance. The independent table construction ensures maximum stability and smooth running operations.



I-VISION

The most modern i-Vision controller is a high quality industrial device. Efficient components and construction resistant to extreme production conditions guarantee failure free operation. Unsurpassed functionality of proprietary software and intuitive drive interface enable full exploitation of the machine's capacity. i-Vision controller installed on moving arm delivers the unique ergonomic and comfortable work.



CONSTRUCTION

Opal Waterjet has gantry construction. The machine is made of steel closed profiles which ensure great stability. Rail elements where protected against harmful influence of water with protective bellows or covered by aluminum parts. Relatively low weight of the gantry and specially grounded racks furnishes our Opal Waterjet with excellent dynamics and high precision engines increase accurate positioning.

ADDITIONAL EQUIPMENT



PRO-X 3D CUTTING TORCH



SCRATCH CONVEYOR



WATER SOFTENING SYSTEM



ABRASIVE CUTTING



Plasma generators

We cooperate with the leading plasma system suppliers: Kiellberg and Hypertherm. Technologies provided by our partners, enable us to achieve the supreme plasma cutting performance. Modern plasma sources' capacity ensures the high precision and accuracy of beveling angle, that brings cutting scrap to a minimum.

Hypertherm® True Hole™

HyPerformance Plasma System

HyPerformance plasma system ensure the HD cutting quality, that combine high accuracy, fast cutting speed and increased consumables lifetime. Additionally, it offers low cutting costs and maximizes productivity.



Type	Max. piercing	Max. cut capacity from an edge start
HPR 130 XD	25 mm	38 mm
HPR 260 XD	32 mm	64 mm
HPR 400 XD	50 mm	80 mm
HPR 800 XD	50 mm	80 mm

Data depend on the type of material and structure.

Powermax Plasma System

Powermax family series products are highly professional plasma systems. The machines are an ideal choice for hand or automated cutting and gouging.



Type	Max. piercing	Max. cut capacity from an edge start
Powermax 65	10 mm	32 mm (hand torch)
Powermax 85	12 mm	38 mm (hand torch)
Powermax 105	16 mm	50 mm (hand torch)
Powermax 125	20 mm	57 mm (hand torch)
MAX PRO 200	32 mm	75 mm (hand torch)

Data depend on the type of material and structure.



HiFocus generators

HiFocus series machines are ideal choice for cutting any kind of low-alloy and high-alloy steel. Special parameters values make it ideally suited especially for cutting aluminum and stainless steel.



Type	Max. piercing	Max. cut capacity from an edge start
HiFocus 80i NEO	12 mm	25 mm
HiFocus 130 NEO	25 mm	40 mm
HiFocus 161i NEO	30 mm	50 mm
HiFocus 280i NEO	35 mm	70 mm
HiFocus 360i NEO	40 mm	80 mm
HiFocus 440i NEO	50 mm	120 mm
HiFocus 600i NEO	80 mm	160 mm

Data depend on the type of material and structure.

SmartFocus generators

SmartFocus series machines are good alternative to the HiFocus series. With comparable parameters, the user benefits from significantly lower investments costs and purchase costs.



Type	Max. piercing	Max. cut capacity from an edge start
SmartFocus 130	25 mm	40 mm
SmartFocus 200	30 mm	60 mm
SmartFocus 300	40 mm	80 mm
SmartFocus 400	50 mm	100 mm

Data depend on the type of material and structure.

PA-S generators

PA-S plasma sources a narrow cutting range, minimal loss of material and deleterious substances emissions reduction, thanks to accurate plasma stream coupled with Double-Straight function.



Type	Max. piercing	Max. cut capacity from an edge start
PA-S45W	20 mm	45 mm (hand torch)
PA-S70W	30 mm	70 mm (hand torch)

Data depend on the type of material and structure.



High pressure pumps



thyssenkrupp

Ultrahigh pressure pump under UHDE brand is the core element of the waterjet cutting system, for working pressure of up to 6000 bar. Depending on the type of material, the maximum thickness-cutting capacity is up to 250 mm. Waterjet cutting technology allows to cut a wide variety of materials – steel, glass, stone and plastics.



Type	HPS 4022	HPS 4037 HPD 4037	HPD 4055	HPD 4075	HPS 6045 HPD 6045	HPD 6090
Motor power [kW]	22	37	55	75	45	90
Max. flow rate [l/min]	2,3	3,8	5,7	7,6	2,8	5,4
Operating pressure [bar]	400-3800	400-3800	400-3800	400-3800	600-6000	600-6000
Oil tank volume [l]	100	200	200	200	200	200
Length [mm]	2300	2300	2300	2650	2650	2650
Width [mm]	760	1050	1050	1200	1200	1200
Height [mm]	1410	1470	1470	1470	1470	1470



A Member of Dr. Aichhorn Group



Type	Ecotron 40.37	Servotron 40.37
Motor power [kW]	37	37
Max. flow rate [l/min]	3,8	3,8
Operating pressure [bar]	4000	4000
Oil tank volume [l]	130	95
Length [mm]	1800	1950
Width [mm]	800	970
Height [mm]	1150	1400



Laser beam source



IPG reliable fiber laser source of modular construction has over 30% wall plug efficiency which gives the result of a three fold decrease in power consumption comparing to CO₂ laser and estimated lifetime is up to 100 000 working hours.

Resonator	YLS-1000	YLS-2000	YLS-3000	YLS-4000	YLS-5000	YLS-6000
Power (kW)	1,0	2,0	3,0	4,0	5,0	6,0
Recommended cooling power (kW)	2,1	4,2	6,4	8,5	10,4	12,6
Electrical connection (kW)	3,1	6,1	9,1	12,1	15,1	18,2

Max. thickness	YLS-1000	YLS-2000	YLS-3000	YLS-4000	YLS-5000	YLS-6000
Black steel [mm]	10	15	18	20	22	25
Stainless steel [mm]	4	8	10	12	15	20
Aluminum [mm]	4	8	10	12	15	15

Data depend on the type of material and structure.

3. Professional compressed air system



We have a pleasure to present you a new series of screw compressed air motors, for working power from 5,5 to 15 kW. These devices were designed for small and medium-sizes companies, appreciating reliability and low costs of compressed air generation. Stand alone compressors or tank-mounted compressors (with integrated air dryer option) available. It simplifies to make an optimal solution that meets your needs.

The new series of compressors are unique due to applied technical solutions which results advantages as bellow:

- Energy saving associated with the use of highly efficient level of compressing.
- Reliability and low operating costs due to the quality and durability of the components used, as well as high quality of maintenance.
- Easy to use operation resulting from the „plug & play“ and „user friendly“ implementation. The possibility of immediate use of device (easy start-up) without complicated installation work also advanced digital controller managing and coordinating machine's work. It minimizes the amount of attention that user must exploit to produce compressed air in a factory.
- The high quality of produced compressed air and very low level of noise during work.

Screw compressed air motors KZB COMBO MOST

Tank-mounted compressor, equipped with dryer, pre-filter and fine filter.



Model	KZB 5,5 kW 500 l COMBO			KZB 7,5 kW 500 l COMBO		
Compressor	Screw			Screw		
Power	5,5 kW			7,5 kW		
Pressure [bar]	8	10	13	8	10	13
Efficiency [l/min]	850	700	550	1150	1000	850
Efficiency [m³/h]	51	42	33	69	60	51
Catalogue no.	60 84 000500	60 84 000501	60 84 000502	60 84 000510	60 84 000511	60 84 000512
Weight	340 kg			350 kg		
Volume	68 dB (A)			70 dB (A)		
Container	500 l			500 l		
Dimension						
Length	2030 mm			2030 mm		
Width	650 mm			650 mm		
Height	1500 mm			1585 mm		
Equipment						
Dryer	yes			yes		
Pre-filter (micron)	1			1		
Fine filter (micron)	0.01			0.01		



Model	KZB 11 kW 500 l COMBO			KZB 15 kW 500 l COMBO		
Compressor	Screw			Screw		
Power	11 kW			15 kW		
Pressure [bar]	8	10	13	8	10	13
Efficiency [l/min]	1650	1500	1200	2250	2150	1600
Efficiency [m³/h]	99	90	72	135	129	96
Catalogue no.	60 84 000520	60 84 000521	60 84 000522	60 84 000530	60 84 000531	60 84 000532
Weight	400 kg			400 kg		
Volume	71 dB (A)			73 dB (A)		
Container	500 l			500 l		
Dimension						
Length	2030 mm			2030 mm		
Width	650 mm			650 mm		
Height	1730 mm			1730 mm		
Equipment						
Dryer	yes			yes		
Pre-filter (micron)	1			1		
Fine filter (micron)	0.01			0.01		





Screw compressed air motors KZB MOST

Tank-mounted compressor, without dryer, pre-filter and fine filter.



Model	KZB 5,5 kW 270 l		
Compressor	Screw		
Power	5,5 kW		
Pressure [bar]	8	10	13
Efficiency [l/min]	850	700	550
Efficiency [m³/h]	51	42	33
Catalogue no.	60 84 000400	60 84 000401	60 84 000402
Weight	240 kg		
Volume	68 dB (A)		
Container	270 l		
Dimensions			
Length	1280 mm		
Width	650 mm		
Height	1630 mm		



Model	KZB 5,5 kW 500 l			KZB 7,5 kW 500 l		
Compressor	Screw			Screw		
Power	5,5 kW			7,5 kW		
Pressure [bar]	8	10	13	8	10	13
Efficiency [l/min]	850	700	550	1150	1000	850
Efficiency [m³/h]	51	42	33	69	60	51
Catalogue no.	60 84 000403	60 84 000404	60 84 000405	60 84 000410	60 84 000411	60 84 000412
Weight	330 kg			350 kg		
Volume	68 dB (A)			70 dB (A)		
Container	500 l			500 l		
Dimensions						
Length	1910 mm			1910 mm		
Width	650 mm			650 mm		
Height	1710 mm			1710 mm		



Model	KZB 11 kW 500 l			KZB 15 kW 500 l		
Compressor	Screw			Screw		
Power	11 kW			15 kW		
Pressure [bar]	8	10	13	8	10	13
Efficiency [l/min]	1650	1500	1200	2250	2150	1600
Efficiency [m³/h]	99	90	72	135	129	96
Catalogue no.	60 84 000420	60 84 000421	60 84 000422	60 84 000430	60 84 000431	60 84 000432
Weight	360 kg			360 kg		
Volume	71 dB (A)			73 dB (A)		
Container	500 l			500 l		
Dimensions						
Length	2030 mm			2030 mm		
Width	650 mm			650 mm		
Height	1730 mm			1730 mm		



Screw compressed air motors K MOST

Stand alone compressor, without tank, pre-filter and fine filter.



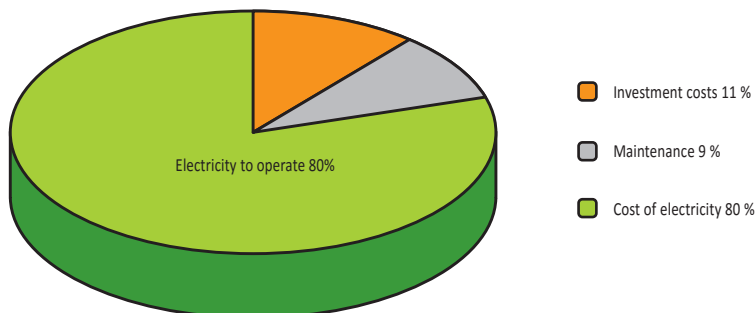
Model	K 5,5 kW 500 l			K 7,5 kW 500 l		
Compressor	Screw			Screw		
Power	5,5 kW			7,5 kW		
Pressure [bar]	8	10	13	8	10	13
Efficiency [l/min]	850	700	550	1150	1000	850
Efficiency [m³/h]	51	42	33	69	60	51
Catalogue no.	60 84 000300	60 84 000301	60 84 000302	60 84 000310	60 84 000311	60 84 000312
Weight	180 kg			200 kg		
Volume	68 dB (A)			70 dB (A)		
Container	500 l			500 l		
Dimensions						
Length	970 mm			970 mm		
Width	650 mm			650 mm		
Height	860 mm			860 mm		



Model	K 11 kW 500 l			K 15 kW 500 l		
Compressor	Screw			Screw		
Power	11 kW			15 kW		
Pressure [bar]	8	10	13	8	10	13
Efficiency [l/min]	1650	1500	1200	2250	2150	1600
Efficiency [m³/h]	99	90	72	135	129	96
Catalogue no.	60 84 000320	60 84 000321	60 84 000322	60 84 000330	60 84 000331	60 84 000332
Weight	250 kg			250 kg		
Volume	71 dB (A)			73 dB (A)		
Container	500 l			500 l		
Dimensions						
Length	970 mm			970 mm		
Width	720 mm			720 mm		
Height	1003 mm			1003 mm		



How much does compressed air cost?

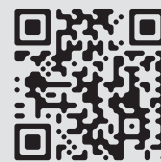


All indicated data refers to screw compressed air motor at 40 000 h operating time.

Energy savings in compressed air systems depend on:

- Efficient heat recovery.
- Implementation of energy saving solutions (superior control).

4. Semi-automatic gas cutting machines



Scan to visit our website
www.rywal.eu/f032



Handy Cut MOST

Semi-automatic torch Handy Cut MOST is designed for automatic steel cutting, which improves the quality of cutting process. It is an ideal choice for treatment of metal-sheets, pipes, profiles sections and irregularly shaped elements. In order to clean up and get smooth cutting edges, remember to set specific cutting parameters, such as the constant speed of the torch traversing, the distance between the nozzle and element, and proper flame adjustment. Solutions applied in this unit prevent from changing the working parameters during cutting. The automatic ignition system is another very interesting solution that enables to ignite the pre-heating flame anytime you pull a trigger. Flame is extinguished in a similar way. Thanks to this method, we can significantly reduce costs by saving time and consumables. Additionally, device guarantees steeples control of speed and direction of cutting.

With HANDY Cut Most it is possible:

- to do the rectilinear and curvilinear cutting of sheet up to 50 mm thickness,
- to make beveling edges (0-45°),
- to cut circles with a diameter from 30-200 mm and 125-500 mm.

Catalogue no.	Name	Cutting thickness	Cutting speed	Diameter of cut holes	Weight	Characteristics
60 70 000100	HANDY CUT	5-50 mm	150-530 mm/min	30-500 mm	2,8 kg	Torch with electric driving gear, equipped in auto-starter



Built-in ignition system



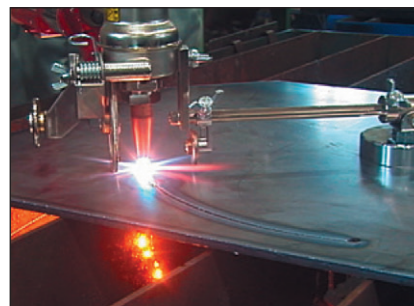
Torch with electric driving gear for curvilinear cut



Small circle cutting attachment (Ø 30-200 mm)



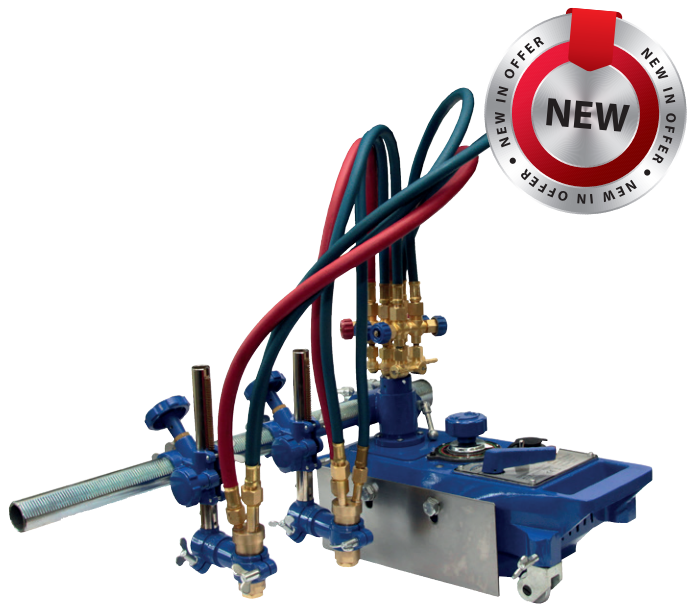
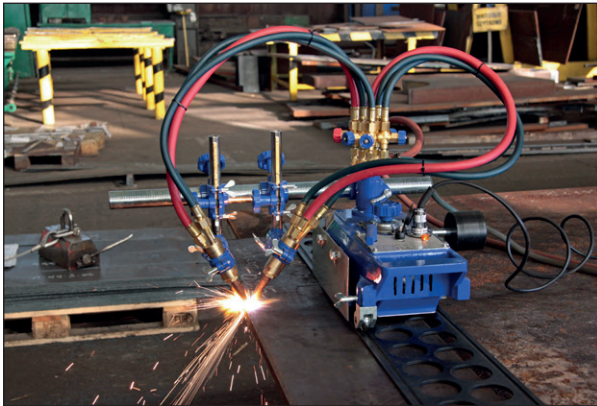
Beveling device



Big circle cutting attachment (Ø 125-500 mm)



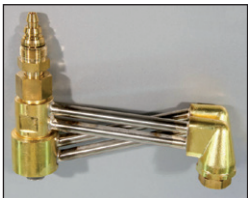
M 12 Wasp MOST



This is a semi-automatic cutting machine, with double-torches mounted on the rail, designed for cutting and beveling of plates up to 150 mm thickness. It is typically used in all industrial works where steel cutting is performed. Thanks to aluminium body, machine is overheat-resistant. Induction motor protects device from voltage spike damages, what ensures smooth and easy operating.

Catalogue no.	Name	Cutting thickness	Cutting speed	Diameter of cut holes	Weight	Characteristics
60 70 000400	M 12 WASP	5-150 mm	80-800 mm/min	40-2650 mm	11 kg	Semi-automatic cutting machine

Additional equipment:



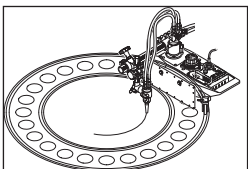
Double torch

Strips cutting device. Suitable for cutting 30-300 mm thick stripes. No distortion during cutting.



Beveling device

It enables to increase the beveling capabilities for MOST cutting machines. It can be applied in: reduction and thinning of sheets, sharpening of plowshares for excavators and loaders.



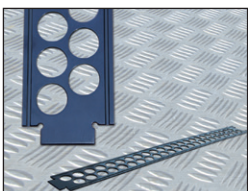
The peripheral rail Wasp

Rail combined with M-12 Wasp device. Designed for cutting or beveling of angles (between 40-360 mm and 770-1150 mm).



Circle cutting attachment

Enables to cut different size holes. Minimum diameter depends on the dimensions of device which circle cutting attachment is set up on.



Standard rail Wasp, Bee

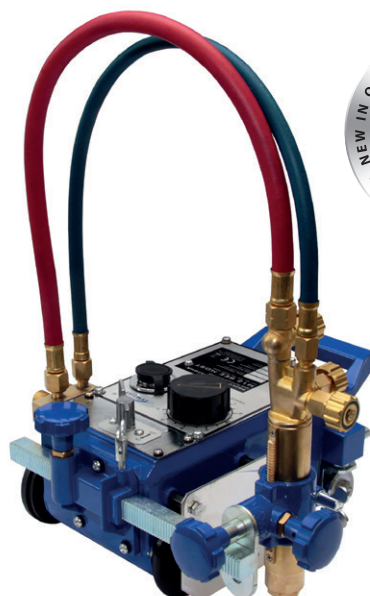
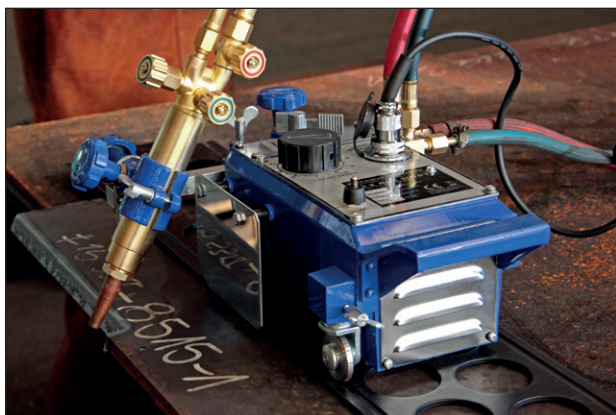
Aluminum alloy rail, combined with M-12 Wasp and M-12 Bee devices. Length of 1800 mm (other various length available on request).

Rails can be connected together and stabilized by magnetic support.





M12 Bee MOST

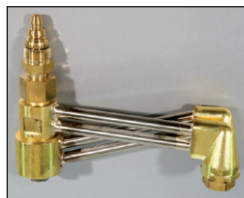


Semi-automatic gas cutter M12 Bee MOST is device designed for oxygen-cutting of any sheet up to 150 mm thickness. The possibility of beveling edges up to 45° allows preparing sheets for welding, without a necessity of time-consuming machining process. The automatic stepless gear provides a failure-free operation, what distinguish this unit from these devices, which are equipped with potentiometer to control speed.

Catalogue no.	Name	Cutting thickness	Cutting speed	Diameter of cut holes	Weight	Characteristics
60 70 000300	M 12 Bee	5-150 mm	80-800 mm/min	40-2650 mm	10 kg	Semi-automatic cutting machine



Additional equipment:



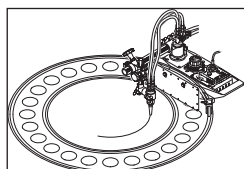
DoubleTorch

Strips cutting device. Suitable for cutting 30-300 mm thick stripes. No distortion during cutting.



Beveling device

It enables to increase the beveling capabilities for MOST cutting machines. It can be applied in: reduction and thinning of sheets, sharpening of plowshares for excavators and loaders.



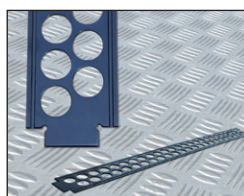
The peripheral rail Wasp

Rail combined with M-12 Wasp device. Designed for cutting or beveling of angles (between 40-360 mm and 770-1150 mm).



Circle cutting attachment

Enables to cut different size holes. Minimum diameter depends on the dimensions of device which circle cutting attachment is set up on.



Standard rail Wasp, Bee

Aluminum alloy rail, combined with M-12 Wasp and M-12 Bee devices. Length of 1800 mm (other various length available on request).

Rails can be connected together and stabilized by magnetic support.

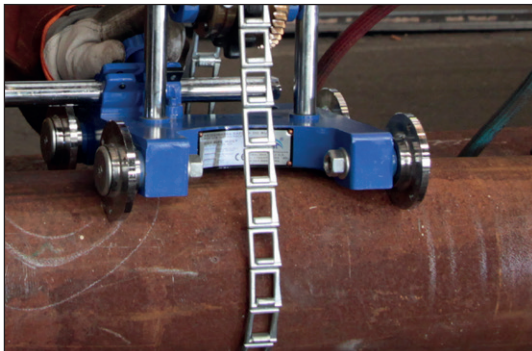


Gas cutting machine Oxy Pipe MOST



Oxy Pipe MOST is oxy-fueled, this is manually driven, pipe cutting machine. Due to use of worm gear, movement of the machine on the pipe surface can be done smoothly, which guarantees perfect quality of cutting and beveling edges (range of beveling 0-45°). The clutch allows easy positioning of machine on the pipe. Minimal diameter of cutting pipe is 115 mm. In case of smaller diameters machine can be equipped with special wheel adaptors. There are no limits for maximum size of pipe diameter. It is possible to extend the chain for any suitable length. Oxy Pipe Most can be also used on pre-isolated pipes.

Catalogue no.	Name	Cutting thickness	Cutting speed	Diameter of cut holes	Weight	Characteristics
60 70 000200	Oxy Pipe	5-50 mm	80-800 mm/min	from 115 mm upwards	11,5 kg	Semi-automatic cutting machine



Additional chain, 1000 mm length



5. Hydrogen generators



EP-580 B

The Hydrogen Generator is a machine that generates hydrogen and oxygen in the process of electrolysis. Electrolysis is considered as the cleanest option for industrial production of high-purity hydrogen and oxygen (hydrogen with a purity higher than 99,9%). The decomposition of water into oxygen and hydrogen by an electric current first carried out in 1839 by physicist Grave.

In oxy-fuel cutting, steel is heated up to its burning temperature. A stream of oxygen is then trained on the metal, burning it into a metal oxide that flows out of the kerf as slag. Oxy-fuel processes use a variety of fuel gases, the most common being acetylene, propane-butane or natural gas. It often involves taking responsibility of storage and transport of these flammable gases. Explosion hazard associated with flammable gases transfer, may lead to the risk of their accumulation, leak – and as a consequence- explosion.

Oxygen (the mixture of oxygen and hydrogen produced in the process of cutting), might be used in automatic torches, instead of using the traditional gases, such as acetylene, propane-butane or natural gas. Hydrogen generator produces a continuously preheated mixture, without storing it.

Features and benefits:

- produces a continuous supply,
- no necessity of storing gases,
- no fumes and hydrocarbon toxicity in the process of oxy-fuel,
- minimal volume of hydrogen,
- remarkably reduces UV radiation,
- faster material preheating,
- high-quality high-precision cutting.



EP-1000

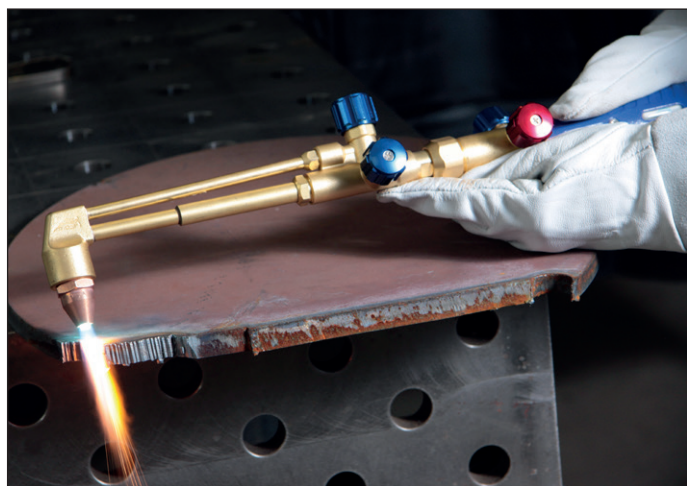
Type	EP-560A	EP-580B	EP-1000
Capacity	4000 L/h	6000 L/h	11000 L/h
Phase	3~	3~	3~
Current	60 A	60 A	60 A
Power consumption	14,3 kW/h	19 kW/h	29 kW/h
Max. working pressure	1,5 kg/cm ²	1,5 kg/cm ²	1,5 kg/cm ²
Water consumption	2,15 L/h	3,23 L/h	5,91 L/h
Water tank	15 L	15 L	30 L
Water feed	auto	auto	auto
Dimensions - WxDxH	700x1620x1400 mm	700x1620x1400 mm	A:910x490x1650 mm, B:505x565x1980 mm; C:780x1335x1580 mm
Weight	400 kg	390 kg	A:160 kg; B:180 kg; C:780 kg



EP-560 A

Where to apply the hydrogen generator?

Depending on a capacity, RYWAL-RHC recommend to use hydrogen generators as a source of pre-heating gas mixture for CNC gas machines (with one - or multiple torches), or semi-automatic cutting machines.



6. Gas regulators



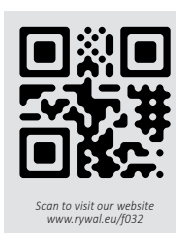
MOST cylinder regulators



BRASS MOST
Oxygen



BLUE MOST
Oxygen



All our regulators are suitable for working with inlet pressure of about 200 bar (20 MPa) and keep the inlet pressure at a constant level set by the user. The setting of working pressure is simple and accurate.

Regulators meet all the requirements PN-EN ISO 2503 standard following all safety demands of applied material, quality control and work performance.

A regulator safety valve located behind the manometer improves the overall safety of working conditions.

Each regulator is equipped with an outlet valve. The working pressure only needs to be set once and the valve must be closed during working breaks.

The gas regulator

The unique construction of the reduction valve increases the gas regulator lifetime and stability. The reduction valve is situated in a specially designed capsule crowned with a very precise filter, which is made of sintered powders of micro porous structure preventing dust, metal fillings, and other impurities that may cause lower tightness of the valve.

Advantages of MOST regulators with::

- possibility to work with inlet pressure of 200 bar (20 MPa),
- strong and safe construction,
- simple to operate,
- high stability of working pressure,
- simple and accurate pressure control,
- high durability,
- simple maintenance,
- simple and time-saving service,
- availability of spare parts,
- cut-off valve, included into price,
- high quality, repeatability,
- high-quality safe manometers,
- reasonable price,
- 2 years warranty.



Remember to use flashback arrestors with regulators.



BRASS MOST
Oxygen



BRASS MOST
Acetylene



BRASS MOST
Ar/CO₂



BRASS MOST
Propane



BLUE MOST
Oxygen



RED MOST
Acetylene



BLACK MOST
Ar/CO₂

Catalogue no.		Gas type	Max. inlet gas pressure	Working pressure range	Max. flow	Nut thread at inlet	Nut thread at outlet	Hose end	Characteristics
62 30 750100	Brass MOST	Oxygen	200 bar	0-10 bar	30 m³/h	G 3/4	G 1/4	6,3 mm	One stage regulator
62 30 750200	Brass MOST	Acetylene	25 bar	0-1,5 bar	5 m³/h	Shackle	G 3/8LH	8 mm	One stage regulator
62 30 750400	Brass MOST	Ar/CO₂	200 bar	0,5-6 bar	0-32 l/min	W 21,8 x 1/14"	G 1/4	6,3 mm	One stage regulator with manometer gas flow gauge
62 30 750500	Brass MOST	Propane	15 bar	0-1,5 bar	4 m³/h	W 21,8x1/14"	G 3/8LH	8 mm	One stage regulator
62 35 000050	Blue MOST	Oxygen	200 bar	0-10 bar	30 m³/h	G 3/4	G 1/4	6,3 mm	One stage regulator
62 35 000100	Red MOST	Acetylene	25 bar	0-1,5 bar	5 m³/h	Shackle	G 3/8LH	8 mm	One stage regulator
62 35 000150	Black MOST	Ar/CO₂	200 bar	0,5-6 bar	0-32 l/min	W 21,8 x 1/14"	G 1/4	6,3 mm	One stage regulator with manometer gas flow gauge

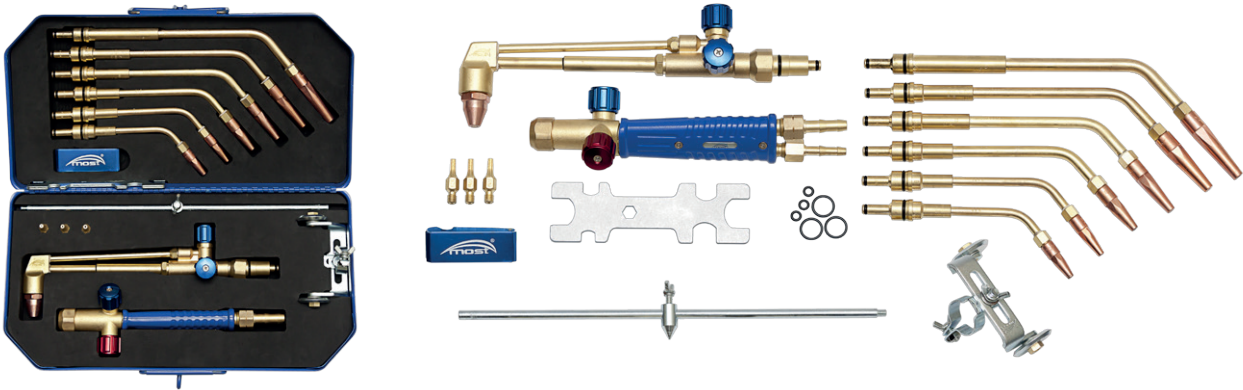
7. Torches

7.1. Universal torches



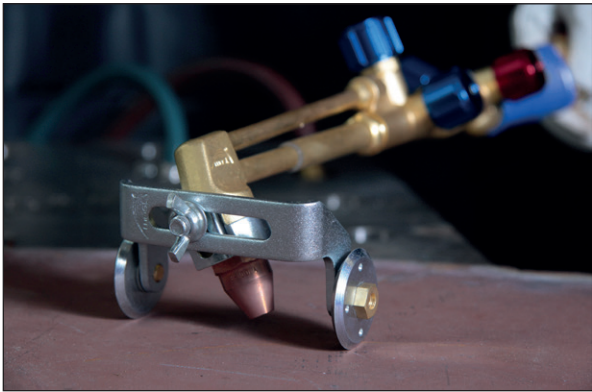
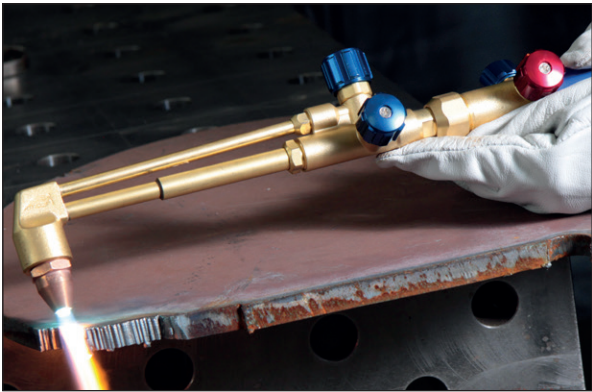
CutWeld MOST universal torch (for welding and cutting)

MOST CutWeld- is an acetylene-oxygen cutting torch with an injector mixer, designed for manual welding of steel up to 14 mm thickness, and oxy-fuel cutting steel of 3-100 mm thickness. This unit features a compact structures and lightweight. Welding attachments are equipped with outlets and cutting nozzle set with grooved nozzles, and cutting oxygen valve with knob.



Catalogue no.	Type	Welding thickness range	Cutting thickness range	Equipment	Characteristics
60 20 000005	CutWeld- A	0,5- 14 mm	3-100 mm	Torch handle 216; 6 welding attachments with outlets, cutting nozzles set, cutting set, key, nozzle cleaners, gasket set.	acetylene-oxygen torch with nozzles

MOST CutWeld- is a basic torch with a wide range of applications that suits to welding and cutting works. It is commonly used in both, big industrial companies and small workshops, for manufacturing, assembly and renovating works that refer to gas welding. Suitable for welding of: steel, cast-iron, copper, brass, aluminum, other metals and alloys, or oxy-fuel cutting of carbon or low-alloy steel. It also enables to do works related to welding, such as preheating, brazing, or singeing.





Accessories for CutWeld MOST torch

Cutting nozzle CutWeld		
Catalogue no.	Type	Characteristic
61 40 000060	CutWeld	Cutting attachment for CutWeld-A torch



CutWeld universal handle		
Catalogue no.	Type	Characteristic
61 40 000050	CutWeld	Handle for CutWeld torch



Heating nozzle cut-A				
Catalogue no.	Nozzle type	Nozzle no.	Cutting range	Characteristic
61 40 000009	Cut-A	1A	3-100 mm	for CutWeld torch



Cutting nozzles cut-A				
Catalogue no.	Nozzle type	Nozzle no.	Cutting range	Characteristic
61 40 000001	Cut-A	1A	3- 8 mm	for CutWeld torch
61 40 000002	Cut-A	2A	5 - 15 mm	
61 40 000003	Cut-A	3A	15- 30 mm	
61 40 000004	Cut-A	4A	30- 60 mm	
61 40 000005	Cut-A	5A	60- 100 mm	



Welding attachment for CutWeld torch				
Catalogue no.	Type	Nozzle no.	Cutting range	Characteristic
61 40 000041	Cut-A	1A	0,5- 1 mm	for CutWeld torch
61 40 000042	Cut-A	2A	1- 2 mm	
61 40 000043	Cut-A	3A	2- 4 mm	
61 40 000044	Cut-A	4A	4- 6 mm	
61 40 000045	Cut-A	5A	6- 9 mm	
61 40 000046	Cut-A	6A	9-14 mm	



Key



Cutting trolley



O-ring set



Nozzle cleaners



Circle cutting attachment



7.2. Cutting torches

**Cutting torch CUT A/P MOST curved**

Cutting CUT A/P MOST- curved is injector type torch with the internal mixing of flammable gas and oxygen. The unit includes grooved nozzles that enable to increase the cutting speed and quality at the same time. Grooved nozzles also allow to decrease technical gas consumption.



Catalogue no.	Description	Cutting range	Weight
60 20 000011	Torch CUT A MOST curved – Acetylene	3-300 mm	1,2 kg
60 20 000021	Torch CUT P MOST curved – Propane	3-300 mm	1,2 kg

Accessories: nozzle set (100 mm), gasket set. Cardboard package.



Cutting nozzles



Heating nozzles

Nozzles – cutting thickness range (mm)									
Gas	Cutting nozzles							Heating nozzles	
	3-8	5-15	15-30	30-60	60-100	100-200	200-300	3-100	100-300
Acetylene (Cut-A)	61 40 00001	61 40 00002	61 40 00003	61 40 00004	61 40 00005	61 40 00006	61 40 00007	61 40 00009	61 40 00010
Propane (Cut-P)	61 40 00011	61 40 00012	61 40 00013	61 40 00014	61 40 00015	61 40 00016	61 40 00017	61 40 00019	61 40 00020



Cutting torch CUT-A/P MOST

Cutting CUT A/P MOST is injector type of torch with the internal mixing of flammable gas and oxygen. The unit includes grooved nozzles that enable to increase the cutting speed and quality at the same time. Grooved nozzles also allow decreasing of technical gas consumption. MOST torches are additionally equipped with an anti-reverse valve that prevents gases from reverse flow.

Catalogue no.	Description	Cutting range	Weight
60 20 000010	Torch CUT-A MOST-acetylene	3-300 mm	1,2 kg
60 20 000020	Torch CUT-P MOST propane, propane-butane, natural gas	3-300 mm	1,2 kg
Accessories: nozzle set, gasket set, universal key, nozzle cleaners, cardboard package.			



Cutting nozzles



Heating nozzles

Nozzles – cutting thickness range (mm)									
Gas	Cutting nozzles							Heating nozzles	
	3-8	5-15	15-30	30-60	60-100	100-200	200-300	3-100	100-300
Acetylene (Cut-A)	61 40 00001	61 40 00002	61 40 00003	61 40 00004	61 40 00005	61 40 00006	61 40 00007	61 40 00009	61 40 00010
Propane (Cut-P)	61 40 00011	61 40 00012	61 40 00013	61 40 00014	61 40 00015	61 40 00016	61 40 00017	61 40 00019	61 40 00020



Remember to use flashback arrestors with regulators.

8. Arrestors and couplings



Scan to visit our website
www.nywal.eu/032

MOST flashback arrestors for torches



MOST flashback arrestors for torches		
Catalogue no.	Type	Connection
63 94 001128	MOST- oxygen	G 1/4
63 94 001118	MOST- flam. gas	G 3/8 G 3/8 LH
Gas flow capacity for MOST		
Pressure inlet	Acetylene	Oxygen
0,4 bar	2 m ³ /h	-
0,8 bar	7 m ³ /h	-
1,0 bar	8 m ³ /h	-
2,5 bar	-	18 m ³ /h
5 bar	-	27 m ³ /h
7,5 bar	-	32 m ³ /h
10 bar	-	39 m ³ /h

MOST flashback arrestors for regulators



Catalogue no.	Type	Connection	Characteristic
63 94 001030	MOST- oxygen	G 1/4	Flashback arrestors for regulators, with 3 safety levels (against reverse of gas flow, flame and fire of a hose)
63 94 001130	MOST- flam. gas	G 3/8 LH	

MOST hose couplings – for fast connection of hoses

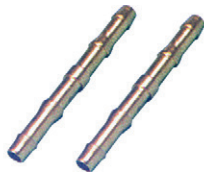


Catalogue no.	Type
63 80 000010	Hose coupling – oxygen
63 80 000020	Hose coupling – flammable gas

9. Accessories

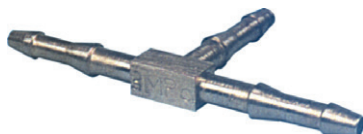


Hose nipples



Catalogue no.	Inside diameter of a hose	Nipple length
61 15 803001	4 mm	71 mm
61 15 803002	6,3 mm	
61 15 803003	8 mm	
61 15 803004	10 mm	
61 15 803005	12,5 mm	75 mm
61 15 803006	16 mm	
Gas-tight at 30 bar		

Hose triple-connectors



Catalogue no.	Inside diameter of a hose	Nipple dimensions
61 15 803040	4 mm	82 x 41 mm
61 15 803041	6,3 mm	82 x 43 mm
61 15 803042	8 mm	82 x 44 mm
Connections and parts gas-tight at 30 bar		

Hose double nipples



Catalogue no.	Ending	Nut
61 15 803090	6,3 G 1/4	G 1/4
61 15 803091	6,3 G 1/4	G 1/4 LH
61 15 803092	8 G 3/8	G 3/8
61 15 803093	8 G 3/8	G 3/8 LH
61 15 803094	10 G 1/2	G 1/2
61 15 803095	10 G 1/2	G 1/2 LH
61 15 803096	16 G 3/4	G 3/4
61 15 803097	16 G 3/4	G 3/4 LH
Connections and parts gas-tight at 30 bar		

Hose connectors stems



Catalogue no.	Type	Hose diameter
61 15 926120	6,3-G1/4 (for oxygen hose)	6,3 mm
61 16 926130	8-G3/8 (for acetylene hose)	8,0 mm

Hose clamps



Catalogue no.	Type
60 39 300001	double
63 13 000006	tie 10/16
63 13 000008	tie 12/20
63 13 000025	tie 8/16
63 13 000026	tie 12/22

Ignition lighters



Catalogue no.	Type
64 81 020099	MARS gas lighter
64 81 010090	Stones for MARS lighter

Gas „Y” Manifolds

Catalogue no.	Type	Thread at inlet	Nut thread at outlet	Hose ending	Comments
61 15 803080	R-2-2z	G 3/8	G 1/4	6,3 mm	2 valves on outlet
61 15 803081		G 3/8 LH	G 1/4 LH		
61 15 803082		G 3/8	G 3/8	8 mm	
61 15 803083		G 3/8 LH	G 3/8 LH		
61 15 803050	R-3-z	G 1/4 (cut-off valve)	G 1/4	6,3 mm	3 connection
61 15 803070	R-3-3z	G 3/8	G 1/4	6,3 mm	3 valves on outlet
61 15 803071		G 3/8 LH	G 1/4 LH		
61 15 803072		G 3/8	G 3/8	8 mm	
61 15 803073		G 3/8 LH	G 3/8 LH		





Welding hoses



Catalogue no.	Type	Length
63 70 000056	Hose for oxygen 6,3 mm	50 m
63 71 000086	Hose for acetylene 9,0 mm	50 m
63 72 000096	Hose for propane 10,0 mm	50 m

Electric gas heater



Catalogue no.	Type
61 18 577450	PG-84 without plug
61 18 577460	PG-84 with plug

Technical data	
Nominal outlet pressure	200 bar
Max. CO ₂ flow	1000 dm ³ /h
Power supply	24 V AC, 50 Hz
Power plug	SzR 16 P2 NG 5 (with clots)
Inlet thread	W 21,8 x 1/14"
Outlet thread	W 21,8 x 1/14"
Weight	0,8 kg

Gas cylinder trolleys



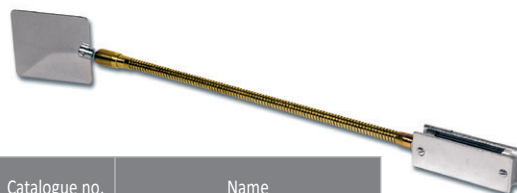
Catalogue no.	Type
65 00 133210	Manual two-cylinder trolley MOST
65 00 133219	One-cylinder trolley MOST (pneumatic wheels)
65 00 133216	One-cylinder trolley MOST (full wheels)

Hammer



Catalogue no.	Type
50 00 001700	MST-400
Length: 280 mm Weight: 0,5 kg	

Welding mirror



Catalogue no.	Name
60 34 300200	Welding mirror
60 34 300201	Welding mirror insert

Covers for regulators



Catalogue no.	Type
61 10 899997	MOST black M63
61 10 899998	MOST red M63 (acetylene)
61 10 899999	MOST blue M63 (oxygen)
60 31 000120	Double cover black MOST

These effective rubber shields provide excellent mechanical protection of manometers. Due to their construction, small safety flaps at manometers back side are covered.

Manometers for technical gases



Catalogue no.	Type
61 10 000010	MOST for oxygen Ø 63 M12x1,5 0-16 bar
61 10 000020	MOST for oxygen Ø 63 M12x1,5 0-315 bar
61 10 000030	MOST for acetylene Ø 63 M12x1,5 0-4 bar
61 10 000040	MOST for acetylene 63 M12x1,5 0-40 bar
61 10 000110	MOST for oxygen Ø 63 G1/4 0-16 bar
61 10 000120	MOST for oxygen Ø 63 G1/4 0-315 bar
61 10 000130	MOST for acetylene Ø 63 G1/4 0-4 bar
61 10 000140	MOST for acetylene Ø G1/4 0-40 bar
Perfect MOST high-quality manometers with excellent parameters.	



Contact tip and nozzle cleaners



Catalogue no.	Type
61 30 763500	Set of tip cleaners

Flow meter

Designed for measuring flow in torches
(MIG-MAG)

Catalogue no. 60 31 100080



10. Gas cylinders



MOST high pressure cylinders

Cylinders - capacity 5 l	
Catalogue no.	Gas
64 95 100005	Oxygen
64 95 200005	Acetylene

Cylinders - capacity 10 l	
Catalogue no.	Gas
64 95 100010	Oxygen
64 95 200010	Acetylene
64 95 300010	CO ₂
64 95 400010	Argon
64 95 500010	Nitrogen
64 95 600010	Helium

Cylinders - capacity 27 l	
Catalogue no.	Gas
64 95 100027	Oxygen
64 95 200027	CO ₂
64 95 300027	Argon
64 95 400027	Nitrogen
64 95 500027	Helium

Cylinders - capacity 40 l	
Catalogue no.	Gas
64 95 100040	Oxygen
64 95 200040	Acetylene
64 95 300040	CO ₂
64 95 400040	Argon
64 95 500040	Nitrogen
64 95 600040	Helium
64 95 700040	Compressed air
64 95 900040	Argon and CO ₂
64 95 900041	Hydrogen

